



RX GOLD & SILVER INC.

**TSX-V: RXE
OTCQX: RXEXF
WWW.RXGOLD.COM**

RX Gold & Silver Inc. is a Canadian listed company with the 100% owned Drumlummon underground gold and silver mine, located in Marysville, Montana. This high grade gold and silver mine started producing in February, 2012.



Investment Highlights

- Unparalleled Board and Management experience for a junior producer
- 100% owned Drumlummon mine is permitted and has started producing - on-going ramp up to full commercial production
- Small inaugural NI 43-101 completed in February from 2011 drilling program - significant organic potential exists
- Adequate financial resources to achieve current production objectives without equity dilution
- RX strategy is to grow aggressively through gold and silver acquisitions in the Americas

Growth Strategy

- Targeting 300,000 ounces of gold equivalent production from combination of Drumlummon and M&A opportunities by end of 2015
- Focused on growing the per share value for shareholders by increasing optionality to gold and silver production. Criteria include:
 - Per share resource growth
 - Per share production growth
 - Per share operating and free cash flow growth
- Pursuing gold and silver production or near term production assets in the America's
- Significant long-term relationships with gold majors, royalty companies and private equity
- Meaningful proposals from private equity firms to help fund acquisitions
- Announced \$10.0 million LOC agreement with HRX LLC (an affiliate of Hale Capital Partners, L.P.) in early November 2011 to manage working capital for mine start-up

Gold & Silver Production

| | GOLD | SILVER |
|----------------------------------|-------------------|---------------------|
| Jun – Dec 2011 (7 months) | 6,000 oz | 80,000 oz |
| 2012 to date | 100 oz/day | 1,200 oz/day |

| | |
|---------------------------------|--|
| Exchange listings | TSX-V: RXE OTCQX: RXEXF |
| Recent share price | USD \$0.36 |
| 52 week low-high ¹ | USD \$0.35–\$0.65 |
| Shares outstanding ¹ | 168.5 million - basic 190.2 million - fully diluted |
| Market capitalization | USD \$60.66 million |
| Officers and Directors | 11% - basic 16% - fully diluted |
| Funds (June 2011) | Sprott Asset Management (8.5%) |

¹ In July 2011 new management and board completed a 5 million share private placement @ 0.456 cents including 5 million warrants @ 0.60 cents outstanding until July 2013

www.rxgold.com

TSX-V: RXE

OTCQX: RXEXF

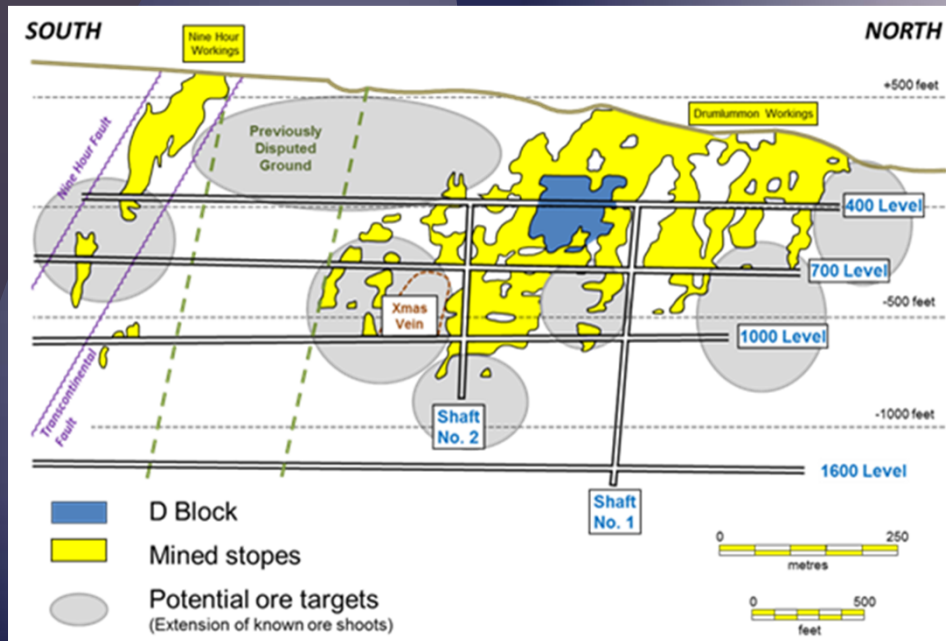


RX GOLD & SILVER INC.

Exploration Potential

- 2011 - 4 month drilling program completed to support inaugural NI 43-101
 - \$2.5 million underground in-fill and surface drill program spent between September and year end
 - February 2012 NI-43-101* estimates 52,500 ounces of gold equivalent in the measured and indicated category and a further 50,500 ounces of gold equivalent in inferred resources completed by Tetra Tech
- \$5 million exploration budget has been approved for 2012.
 - Underground drilling focused on ground between the Drumlummon and 9 Hour workings (formerly 'contested ground')
 - Jubilee area of the Drumlummon Vein, the Northstar Vein, the northern extension of the Drumlummon Vein, the Castletown Vein also targeted
 - Surface drilling will be focused on the 9-Hour Workings, the northern and southern extensions of the Drumlummon Vein, the shallow extensions of other known veins, the Penobscot Extension property and other nearby properties which are in the process of being acquired.
 - The soil geochemical anomalies detected in the 2011 program will be followed-up with detailed sampling, trenching and drilling as appropriate

*February 2012 NI 43-101 resource: 166,063 tons grading 0.316 oz per tonne gold equivalent in M & I resources.
170,505 tons grading 0.296 oz per tonne gold equivalent in inferred resources.



- Cash of approximately US \$1 million* as of February 25, 2012
 - \$6.0 million drawn on LOC agreement as of February 25, 2012
- No equity dilution required to get mine to full commercial production
- All required permits in place for current production under small miners exemption
- Submitted application for full operating permit in Q4 2011 contemplating a 700 ton/day mill on RX property
- Engaged in strong community relations effort with local Marysville community to mitigate mine issues

CORPORATE DATA

RX Gold & Silver Inc.

145 King St. W.
Suite 1220
Toronto, ON
M5H1J8
Canada

MANAGEMENT

Darren Blasutti

CEO

Bob Taylor

COO

Warren Varga

CFO

Jim Atkinson

VP Exploration

Peter McRae

VP Corporate Counsel

BOARD OF DIRECTORS

Lorie Waisberg

Alex Davidson

Louis Dionne

Hugh Agro

Paul Parisotto

Darren Blasutti

John O'Donnell

John Ryan

INVESTOR RELATIONS

Nicole Richard

T: 416-848-1866

E: nrichard@rxgold.com

www.rxgold.com

TSX-V: RXE

OTCQX: RXEF